

PICKSONS

EUROPEAN TRUCK & TRAILER PARTS

CV SMART CHOICE



The leading automotive parts distributor in Europe

CV Issue 10

KNORR-BREMSE



One of our many OE suppliers helping to keep vehicles in their original condition

Call us to discuss the benefits of using OE supplier parts



KEEP IT RUNNING

Heavy Duty Thermostats

p3

NEW 13t Brake Tester

p13

OEM & High Quality Parts

p4

Gates GATES THERMOSTATS

FROM ONLY **£19.70**

Liftmaster

Digital PC Controlled DVSA Approved Brake Tester

LMBT 13 ONLY **£13,995**

5 Year Lease £74.44 pw

Direct Sourcing Solutions

Volvo NOx Sensor ONLY **£380**

(230491 OEM)

NEW EASY!Force Trigger gun for Kärcher pressure washers prevents strain

Kärcher has redefined the most important control element on their commercial cold and hot water pressure washers, with their NEW EASY!Force trigger gun.

The trigger is pushed into the handle by the ball of the hand and the recoil of the water jet then automatically presses the trigger into the hand, contributing to effortless use. The reduced force prevents hand and finger strain and, in turn, muscle cramps. A safety lever in the handle prevents accidental operation, simply released by brief trigger operation.

Kärcher have also introduced a quadruple trapezoidal thread, known more simply as EASY!Lock, which gives a tight and reliable connection between components with only a single 360° turn. Conversion of 476 accessories to the EASY!Lock thread enables all components to be changed quickly and easily. Special adaptors connect the new trigger gun to existing pressure washers and new pressure washers can be connected to existing accessories.

The valve has also been substantially improved. Both main components, ball and valve seat, are now ceramic to ensure a lasting and reliable seal.

Kärcher's EASY!Force trigger gun works with all Kärcher cold and hot water pressure washers with max. pressure of up to 300 bar.



Check out page 15 of this issue for a sample of the machines from the Kärcher range and call your local IFA Member to discuss the full range and to place your order.

Scan here for more information



KÄRCHER

Model 900: a revolutionary new rear light

A new full LED rear lamp has been launched by Truck-Lite, one of the largest global suppliers of CV lighting. The model 900 is the most innovative lamp currently on the market, combining integrated intelligence with boundary pushing aesthetics. It offers the user an industry-leading level of flexibility along with its iconic looks.

The three dimensional shape, homogenous light pattern and patented progressive direction indicator is a revolutionary design which offers unique visual features that improve visibility and safety on the road.



Fully integrated intelligent capabilities eliminate the need for black box monitoring, making the model 900 both practical and widely compatible. With optional proximity sensors in the stalk, it aids parking and reversing, improving safety and driver accuracy.

The model 900 is available for trucks and trailers with or without the stalk with a 5 year warranty as standard, or can be purchased as part of a 'Lifetime Warranty' trailer kit, lowering maintenance costs for fleet owners.

Already being supplied to a number of fleets in the UK and across Europe, the model 900 is available from your local IFA Member.

A Beast of a Battery Booster Pack

Is this the most powerful booster pack on the market?

Startpack Pro 12.24 XL (026711)

- 2 x 50Ah Extremely advanced Exide Spiral AGM internal batteries
- Automatically supplies exact power required
- Sophisticated protection system safeguards user, vehicle electronics & maximizes battery lifetime
- Prevents jump-starting when:
 - the battery is faulty
 - there is a short-circuit at the clamps
 - there is a voltage selection error
- Starts vehicles with AGM/EFB, GEL & liquid batteries
- Heavy duty wheels & handle
- Designed/manufactured in France

- 12V/24V
- 8500A/4250A Peak Current
- 3000A/2600A Cranking Current
- 1600A/1400A Starting Current
- 2 x 2m/70mm² Cables
- 71 kg

Call your local IFA Member to order



ONLY
£1399
5 Year Lease £7.44 pw





Heavy Duty Thermostats

- > Fit & perform like the original
- > Exact fit to avoid leaks
- > Precisely engineered to keep engine temp strictly within OE spec
- > Quality construction for a long, trouble-free life



Top 10 Thermostats

Part No.	Application	ONLY
TH51287G1	DAF CF75, 85, XF95, 105	£47.38
TH07882	DAF CF75, CF85, XF95, XF105 Renault Kerax, Magnum, Premium Volvo B Series, FH, FL, FM	£59.93
TH09180G1	Iveco Eurocargo, Eurofire, Zeta Mercedes-Benz Atego, Axor	£20.46
TH13380G1	Iveco Eurocargo, Eurostar, Eurotech, Eurotrakker, Turbostar MAN E2000, F2000, L2000, TGA, TGS, TGX Mercedes-Benz Atego, Axor	£24.33
TH13480G1	Iveco Eurostar, Eurotech, Eurotrakker	£22.22
TH51785G1	Iveco Eurotech, Eurotrakker, Stralis, Trakker Renault Kerax, Premium Volvo FL, FM Series	£30.21
TH01982G1	MAN TGA, TGL, TGM, TGS, TGX Series Mercedes-Benz Actros, Atego, Axor, Citaro, Econic	£19.70
TH51583G1	Renault C Series, Kerax, Magnum, Major, Maxter, Premium	£28.14
TH51482G1	Renault C, D, K, T Series, Kerax, Magnum, Premium Volvo 7, 8, 9 Series, FH, FM, FMX	£56.04
TH51386	Renault Midliner, Midlum, Premium	£40.32

Radiator Hoses

- > Engineered to resist electrochemical degradation, the leading cause of hose failure
- > Cut to size

Straight Hose

- > Range 8 to 50mm id (4278-)
- > Also available in silicone & Vulco-Flex®

FROM ONLY

£8.30



90° Curved Hose

- > Range from 8 to 80mm id (4272-)
- > Also available in silicone

FROM ONLY

£5.38



Universal Hose Range **NEW!**

- > Go to gatesautocat.com
- > Click on the hose icon
- > Find the hose you need



Call your local IFA Member to order

Visit GatesTechZone.com for:

- > Tech tips
- > Installation tools
- > Installation information
- > Problem diagnosis

WINNARD

Proven quality from the leading UK aftermarket supplier
 Manufacturing brake drums since 1930 & brake discs since 1965
 Investing in quality control to achieve/maintain accreditation ECE R90

ABS sensor faults matter to everyone They matter even more to bus operators!

Brake discs with cast ABS teeth are prone to decay, causing ABS sensor faults

Our new range of brake discs have KTL* coated steel ABS rings, improving corrosion resistance, reducing downtime and saving time and money. Everyone benefits, not only the bus operators!

Decayed cast ABS teeth on an aftermarket disc:



KTL coated steel ABS rings also now available separately

*Electrophoretic coating is widely used in automotive for corrosion protection. A uniform single layer of protection is laid over the entire part, including bends, cavities & areas otherwise hard to reach by powder coating or liquid spraying. The process used is also known as electrocoating, EPD, KTL, etc.

NEW TO RANGE Brake Discs with KTL Coated Steel ABS Rings

DAF SB120, 180, 200 (DA1050+)

Dennis

Elite 2, Trident 2 Rear (DE1053+)

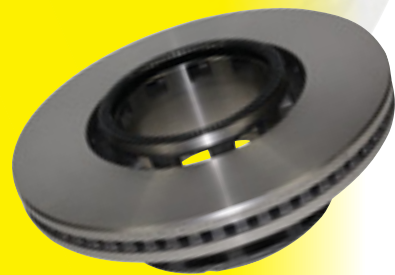
Enviro 200, 300 Rear (DE1055+)

Iveco Stralis Rear (IV1082+)

Meritor

Trailer Axle 430mm (RO1028+)

Trailer Axle 378mm 10 Stud (RO1030+)



Available now - call your local IFA Member to order

WINNARD

OEM & High Quality Truck & Bus Parts Scania • Volvo • DAF • Renault

A leading OEM & aftermarket supplier, we have 30 years+ sourcing & sales experience. We offer a huge range of parts & excellent service!

Direct Sourcing Solutions



DAF

Sump (510036)

ONLY

£405



Scania

Steel Bumper Sections

Middle (190220)

ONLY **£186.45**

Left/Right (190221/2)

ONLY **£218.87** ea



Combination Switch (180013)

ONLY

£137.14



Volvo

Steel Fuel Tank
 315 litre (230034)

ONLY

£555



NOx Sensor (230491OEM)

ONLY

£380



Sump (210077)

ONLY

£375

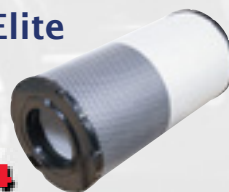


Dennis Elite

Air Filter
 (801185)

ONLY

£45.54



Cab Filter
 (801184)

ONLY

£36.23



www.direct-sourcing-solutions.com

Order from your local IFA Member

febi bilstein Winter-Worn Parts Available NOW!



Double Thermostat Kit (21551)

OE No: 1 916 620 S1

to fit: Scania

ONLY
£24.95



Radiator Cap (32386)

OE No: 1867 861

to fit: DAF CF65, CF75, CF85

ONLY
£20.95



Expansion Tanks (35035)

OE No: 74 01 676 400 / 1676400

to fit: Renault / Volvo B9, B10, FH12, FH16, FH400, FH420, FH440, FH460, FH480, FH500, FH520, FH540, FL12

ONLY
£63.00



(35010)

OE No: 1871 493

to fit: DAF CF65IV, CF75IV, CF85IV

ONLY
£125.95



Water Pumps (26756)

OE Nos: 904 200 49 01 / 74 21 615 952 / 22197705 / 1 510 490

to fit: various Mercedes, Renault, Volvo, Scania

FROM ONLY
£84.95



Windscreen Washer Pumps (26756)

OE No: 50 10 276 022

to fit: Renault

ONLY
£37.00



(26060)

OE No: 21189159

to fit: Volvo FH12, FH16, FM7, FM10, FM12, NH12

ONLY
£19.95



Thermostat (15850)

OE No: 51.06402.0063 S3 / 005 203 26 75 S1

to fit: MAN ECL, ECT, EL, EM, E2000, FOC, FRH, F8, F90, F2000, HOCL, Lion's City/Coach/Explorer/Star, L2000, M90, M2000, NG, NL, NM, NU, RH, SG, SL, SR, SU, TGA, TGL, TGM, TGS, TGX

Mercedes Actros, Atego, Axor, Econic, LK, LS, MK, NG, Zetros

ONLY
£9.99



To order, call your
local IFA Member

www.febi.com



Lucas

ZMB258 SINGLE BOX BULB STAND INCL. 200 FASTEST MOVING 24V BULBS

**PLUS
EXTRA
5 x LLB775
FREE**



**GREAT
VALUE
INSTANT DISPLAY
& STOCK SOLUTION**

Essential bulbs as follows:

ZMB258 INCLUDES 200 BULBS AS STANDARD:

LLB149	30	LLB249	20	LLB460	5
LLB150	20	LLB294	10	LLB466	5
LLB241	10	LLB346	10	LLB475	5
LLB242	10	LLB507	10	LLB775	5
LLB246	10	LLB508	30	PLUS EXTRA FREE:	
LLB248	10	LLB508TAC	10	LLB775	5

ONLY
£99

Call your local
IFA Member
to order today
while stocks last

www.lucaselectrical.co.uk

Trust Lucas

Bulb Stand *OFFER* • Winter-Worn Parts

Commercial Vehicle



Whichever turbo you choose from BTN Turbo, it's always 100% OE!

You're covered with BTN Turbo

- All new turbos are 100% OE, as fitted on the vehicle production line
- All OE Reman turbos use 100% original parts, tested and calibrated to OE spec
- 2 Year warranty on ALL turbos, 1st year No-Quibble on Heavy Duty vehicles
- Over 2,500 part numbers available from stock
- CV applications include: DAF, Volvo, Iveco, Scania, MAN, Mercedes-Benz, Perkins, etc



If a diesel CV turbo supplied by BTN Turbo fails within a year of purchase we'll replace it. Quickly & free of charge. No argument.



**Call your local
IFA Member to order**

Garrett®
by Honeywell



BorgWarner



MITSUBISHI
TURBOCHARGERS

HOLSET®
TURBOCHARGERS

IHI

TECHNICAL TIP Turbos MUST be primed during installation

One of the causes of turbocharger oil starvation could be YOU!

Issue: Running a turbo without oil for ONLY 5 SECONDS is as harmful as running an engine without oil for 5 minutes.

Explanation: Oil problems are the main cause of turbo failure, in fact less than 1% of turbo failures are due to a fault with the turbo itself, BUT over 90% are oil related. BTN's 40+ years of experience in turbochargers has identified three oil-related turbo killers: oil leaks, oil starvation and oil contamination.

The four causes of oil starvation:

Fitting: failing to prime the turbo before powering up

Feed: blocked or kinked oil feed pipes

Feeble pressure: insufficient exhaust back pressure

Filter: a faulty or missing air filter

Solution: If you don't want to cause a turbo failure, make sure you prime the turbo before powering up! Most units include a FREE FitKit, with all the gaskets & studs required for fitting, plus an oil-filled pre-priming injector to prevent oil starvation on start-up. It is important to establish the reason for the previous unit's failure, so check for oil leaks, lack of back pressure or filter problems & always use clean oil.



FLEETPARTS

CELEBRATING 40 YEARS IN BUSINESS



Remanufactured CV Brake Calipers

- Electronic testing ensures fine adjustment, tappet synchronisation & correct braking force
- Comprehensive technical support
- Significant R&D expenditure to enhance & prolong product service life
- 35,000+ Disc Brake Calipers per year pass through our purpose-built Warrington facility
- Our pedigree offers you peace of mind
 - Remanufacturing CV Disc Brake Calipers since 1985
 - Integrated world-class manufacturing software for efficiency & full traceability - we have had continuous ISO 9001 approval since 1991

Call your local IFA Member to order



www.fleetparts.co.uk



S E R V I C E

THERMAL
MANAGEMENT

VISCO® FAN & CLUTCH PRODUCTS

The Experts' Choice

- The market leading OE supplier
- PREMIUM LINE & standard quality ranges to suit all budgets
- Extensive range covers key applications: DAF, MAN, Mercedes, Iveco, Scania, Renault & Volvo Trucks

Call your local IFA Member to order



Contact us - see the back cover for details

INTRODUCING THE NEW

MINTEX[®] VAN KIT

THE BEST A VAN CAN GET...

SAVE TIME & MONEY

with the Mintex LCV one stop box

These exclusive Mintex kits include specific LCV friction, engineered to withstand high temperatures and excessive wear

Pair of Discs



Set of Pads



Brake Accessories



Ceratec Lubricant



For more information & to order call your local IFA Member



www.mintex.co.uk

MINTEX[®]
BRAKING WITH TRADITION

Heavy Duty Battery Terminal Crimping Tool (6615)

- Essential for battery terminal replacement or repair without the need for a vice
- Length: 570mm
- Weight: 3.2kg
- Jaws: 10-120mm²
- Non insulated

ONLY
£89.95



Combination Spanner Set 25pc (6396)

- Metric sizes: 6-32mm (excl. 29 & 31mm)
- Mirror polished Chrome Vanadium
- Spanner roll

ONLY
£39.95



HGV Track Rod End Removal Socket (6443)

- Use impact gun with 36mm socket
- Remove track rod / drag link ends after taper has been separated
- Unique tear-drop shaped skirt slot helps to prevent "cam out" in use
- Internal diameter: 80mm
- Slot width: 32.8mm
- Internal depth: 70mm
- Made in Sheffield
- EU Registered design

ONLY
£79.95



HGV Cooling System Pressure Tester (5615)

- DAF, ERF, Iveco, MAN, Mercedes-Benz, Renault, Scania, Sprinter, Volvo
- Includes pressure pump/gauge

ONLY
£199.95



Deep Impact Socket Set 3/4" D Metric 9pc (6409)

- Contents: 30, 32, 33, 34, 35, 36, 38, 41, 46mm x 90mm long
- Chrome molybdenum with manganese phosphate finish
- Single Hex 6pt

ONLY
£89.95



Flexible Air Hose 13mm x 15m (6653)

- Matt finish, silicone-free super flexible rubber/vinyl hybrid polymer
- Lies flat when uncoiled
- Resists: oil, UV, abrasion & weather
- Hose withstands -40°C to +60°C
- Max. working pressure 300 psi
- Min. bursting pressure 900psi
- 3/8" BSPT fittings with sleeve

ONLY
£34.95




Call your local IFA Member to order

LASER[®]






Electronic Braking Systems (EBS5/7)

EBS5/7 **NEW** to the
AFTERMARKET
from
TRUCKSERVICES 

EBS5/7 Service Kits, Components & Service Parts MAN • Volvo • Renault

Knorr-Bremse supply EBS5/7 as OE to MAN, Volvo & Renault
now available to the aftermarket via their **TRUCKSERVICES**  brand

Genuine Knorr Bremse approved parts • Order from your local IFA Member
OE Quality for lowest possible downtime • All individual components available for replacement
Compatible modules for easy plug 'n play

Foot Brake Module / Service Kits	1-Channel EPMS	2-Channel EPMS	Trailer Control Modules	Electronic Control Units
 Service Kits include: - 4 Bolts - Grease See Note below re: Volvo/Renault				
MAN K039569N50 Volvo / Renault K103367K50 Also available: Silencers	MAN K021204N50 / K050211N50 Volvo / Renault K093190N50	MAN K020024N50 / K050209N50 Volvo / Renault K093192N50 Also available: Silencers & Side Covers	MAN K020623N50 Volvo / Renault K028781N50	MAN 0486106308N50 / 0486106309N50 Volvo / Renault coming soon

Note: When replacing a Foot Brake Module on a Volvo/Renault, the nuts **MUST** be renewed so the FBM is available only as a service kit including all the parts needed

SAFETY » RELIABILITY » QUALITY » COST-EFFECTIVENESS

KNORR-BREMSE 

Electronic Braking Systems (EBS5/7) • Starters & LED Light Bar

Commercial Vehicle



Dimensions:
H600 x
W550 x
D190mm

ONLY
£659

ProStart ULTRA 12/24V
1400/700CA (RPP1400)

- High capacity jump starts
- Starts 24V diesel engines up to 500hp
- Pure lead AGM batteries for high amp starting
- 12V CA 1400A, CCA 720A, Peak 3720A
- 24V CA 700A, CCA 360A, Peak 1860A
- Cast bronze jaws with bridging strap
- Double insulated pure copper starting cables
- Reverse polarity warning buzzer
- External replaceable fuse
- Shatterproof casing
- Optional trolley (RPPTTR)



Dimensions:
H390 x
W340 x
D290mm

ONLY
£235

TradeStart Metal PowerPack
12/24V 1200/600CA (RPPS3000)

- Safeguard protection for safer operation
- Jump starts up to 5.5 litre truck engines
- 1000A capacity clamps
- 12V CA 1200A, CCA 550A, Peak 3000A
- 24V CA 600A, CCA 225A, Peak 1500A
- 2 x 12V DC sockets
- Heavy duty sealed batteries
- up to 4 year service life
- Battery status indicators
- Reverse polarity warning buzzer & indicator



To order, call
your local
IFA Member

TruckMaster LED 'Reg 65'
Amber Light Bar (RCV9821)

- 1148mm Long with clear lens & 10 flash patterns
- Bolt mount (& mounting kit), adjustable legs
- R65, R10 & E Approved, IP67 rated
- 3 Year warranty

ONLY
£315



Contact us - see the back cover for details

TRUST THE COMMERCIAL VEHICLE SPECIALIST

THE 2017 VALEO **HOT** TOP 20

Clockspring Clutch Kits

Renault Magnum (645151)

Renault Master II (827065)

Renault Premium 2 (827186)

Scania P,G,R,T-Series EURO 5 (827293)

Clutch Kits (reman)

Scania P,G,R,T-Series EURO 5 (827294)

DAF CF, XF 430 (827490)

Scania P,G,R,T-Series EURO 6 DC09 (827492)

Mercedes Actros MP2/3 AMT (827498)

Front Lamp Indicator Lighting Switches

Lighting/Wiper Switch Steering Column Module Window Regulator Wiper Blade SWF Wiper Motor Wiper Switch

Mitsubishi Canter FE5, FE6 (44029)

Volvo FH (91023)

Renault Magnum (645147)

Renault Kerax (645148)

Renault Premium 2 (645152)

Renault Magnum (645153)

Iveco Eurotrakker (645137)

Iveco Daily II (251550)

Mercedes Atego, Axor (850957)

Volvo, Renault (132400)

Volvo Truck FL/FE (579410)

Renault Magnum (645157)

Call your local IFA Member to order



Valeo
Service

We care
4you

Expert Quality

10t Long Chassis Hydraulic Trolley 'Quick Lift' Jack (48356)

- Heavy duty with 'quick lift' foot pedal & 3 position locking
- Positioning aided by rear swivelling castors & large saddle
- Safety overload & bypass valves prevent overload
- Manufactured to EN1494
- One piece handle
- Lifting range: 155-550mm
- Overall size: 1600 x 480 x 250mm
- Weight: 150kg

ONLY
£569



3/4" Sq Dr Composite Body Air Impact Wrench (48413)

- Lower noise, low vibration high torque twin hammer action
- Easy forward/reverse one-hand operation
- Rotating air inlet prevents air line tangling
- Composite body - lightweight but rugged
- Reduced operator fatigue / 'cold sink' effect
- Ultimate torque: 1200 lb ft (1627Nm)
- Free speed: 5500 rpm
- Operating air pressure: 90psi (6.2bar)
- Av. air consumption: 6cfm (170L/min)
- Minimum hose size: 3/8" I.D.
- Air inlet: 1/2" BSP
- Weight: 3.4kg

ONLY
£249



Call your local
IFA Member
to order

13hp Petrol Pressure Washer (83819)

- Use where no mains power available
- Heavy duty triplex brass pump head with pressure regulator
- 4 Stroke petrol engine
- 8m High pressure rubber hose with steel reinforcement, metal gun, 5 piece nozzle set, 1/4" plastic hose adaptor & fuel funnel with hose
- Displacement: 389cc
- Speed (no load): 3350-3550r/min
- Flow rate: 12L/min (720L/hr)
- Working pump pressure: 234bar (3400psi)
- Max. pressure: 262bar (3800psi)
- Weight (dry): 55kg
- Caution: Unsuitable for use on domestic vehicles due to high water pressure produced

ONLY
£579



3/4" Sq Dr Precision Torque Wrench (64673)

- Manufactured & calibrated to ISO6789-1992-12-01
- Reversible ratchet head & locking preset action
- Torque values viewed via window in handle
- Range: 120-400Nm, accuracy ±4%
- Overall length: 860mm
- Full instruction manual & calibration certificate included

ONLY
£179



DRAPER
Tools



ALLIANCE & GENERAL LEASING LIMITED

garage equipment Leasing? Why? capital items (over £1000) diagnostics

A sensible alternative to depleting cash reserves:

Let the equipment pay for itself

Earn from your equipment as you pay for it, instead of paying up front in full, then trying to recoup the investment over coming months or years
Spread the cost of your equipment over its useful working life

Leasing makes good business sense:

Lease rentals are 100% allowable against your pre-tax profits
You can offset the total cost during the lease period, deducting payments as a trading expense

100% Tax allowable

The perfect way to fund your business growth:

Access latest technology NOW

Invest in tomorrow's technology today to ensure your business remains competitive
Leasing can fund the latest diagnostic & workshop equipment to enable you to win lucrative new business

Alliance & General Leasing offers a financing solution which is quick & easy to arrange

More information? A quotation?

Call our leasing hotline: 02476 22 00 00
(Quote Smart Choice for preferential rates)

THE UK'S LEADING SUPPLIER OF GARAGE EQUIPMENT...

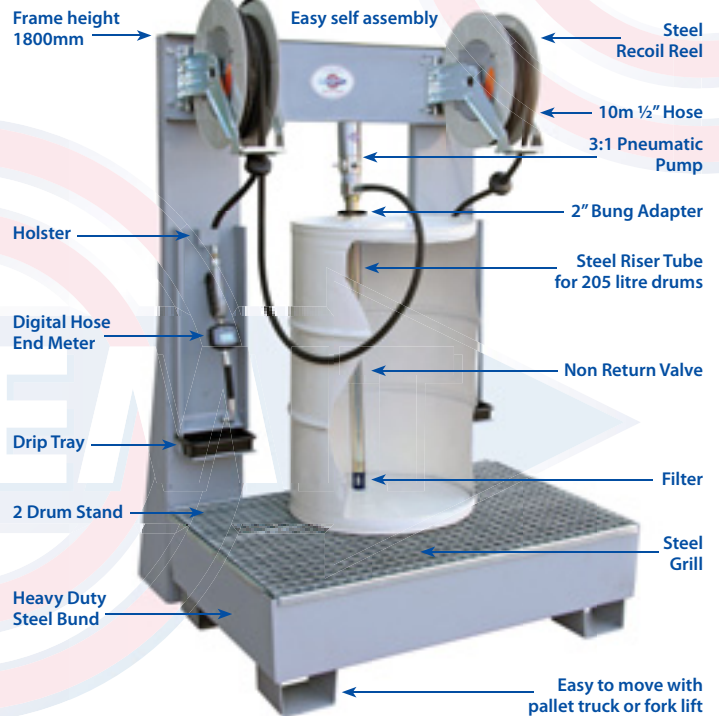


Oil Distribution Centre LA738/COMP

- Takes up to 2 x 205 litre drums
- 1.2m x 1.2m Footprint bund stand with steel grill
- 2 x 10m Retractable oil hose reels on reel frame (1.8m off the ground)
- 2 x 3:1 Oil pumps (2" standard bung adaptors)
- Riser tubes, foot valves & filters for 205 litre drums
- Oil outlet hoses & digital hose end meters
- 2 x Holsters & drip trays
- Includes self-assembly kit
- Uses compressed air supply
- Easily moved with a pallet truck or fork lift

Ideal for busy CV workshops & garages
Clean, economical, safe & secure

FROM **£1499**
5 Year Lease £7.97 pw



Call your local IFA Member to order & for more information

Effortlessly transfer AdBlue® directly from storage to vehicle

IBC Dispensing

IBC Electric Pump Sets 240V

Basic (4335)

- CDS Coupling (ensures no leaks)
- Hose, Suzzara pump & plastic nozzle gun
- Dispensing rate: 40 litres/min
- Stainless steel base plate & nozzle holder

Pro (4334)

- CDS Coupling
- Hose & Suzzara pump
- Dispensing rate: 40 litres/min
- Digital flow meter
- Auto shut off metal nozzle gun
- Stainless steel base plate & nozzle holder



Mobile AdBlue® Dispensing System (4380)

Car & LCV AdBlue® tanks range in capacity from 8 to 18 litres. Ideal for workshop use, this dispenser saves time & money:

- Heavy duty 210 litre drum trolley
- Air operated AdBlue® pump (no electricity required)
- Automatic shut-off nozzle - stops dispensing when tank is full
- Electronic flow meter
- All hoses & fittings



Call your local IFA Member for a quote

CleanAirBlue®

THE AdBlue® Solution from Samuel Banner & Co. Ltd

www.cleanairblue.com

Contact us - see the back cover for details



You're on the right road

We know that **reliability and safety matter the most on the road.**

Our brake pads and brake shoes remain at the cutting edge and we're determined in reaching our goals - **your success is our goal**

Axle set of pads

FROM ONLY £25

www.lumag.pl



friction materials

Traffic Film Remover



QRP25L

- Use at 0.5 to 1% (see below)
- High alkalinity - superior clean & grease cutting
- Dewaxes (polymer wax)
- Cost effective!

Using QRP25L in a pressure washer which can only dilute to 2%?

Simply pre-dilute for the required strength:

- 1 equal volume of water (1% strength)
- 2 equal volumes of water (0.5% strength)

Makes **2500 - 5000 litres!** of ready-to-use TFR*

25 litre Multipurpose Traffic Film Removers
Degrease engines, chassis & components
FROM ONLY £18.50



QYP25L

- Use at 1% dilution
- Cost effective!

*At the dilution rate shown for the product

Makes **2500 litres!** of ready-to-use TFR*



QPP25L

- Use at 1%
- Contains wax for a superior finish
- Cost effective!

Makes **2500 litres!** of ready-to-use TFR*



QGP25L

- Use at 2%
- Ideal for sign written cabs
- Economical

Makes **1250 litres!** of ready-to-use TFR*

SPECIAL OFFER ON BULK QUANTITIES
Call your local IFA Member to order



Mobile Column Lifts

Cabled Lifts - 5.5t/7.5t

(LTW55/LTW75)

- Can be extended to 6 or 8 columns
- Up & down switch on each column
- Lifting time: 250 seconds

4 COLUMNS FROM
£10,499
5 Year Lease £55.85 pw



Wireless Lifts 5.5t/7.5t/8.5t

(LCM305H/LMC307H/LCM308H)

- Can be extended to 6 or 8 columns
- Up to 20 x lift & lower per charge
- Optional adjustable forks for wheels from small to HGV
- Lifting time: 90 seconds

4 COLUMNS FROM
£17,399
5 Year Lease £92.55 pw



Pantograph Lifts

8000 Series - 20t to 35t

- Electro hydraulic
- Lifting capacity: 20t to 35t
- Platform length: 8 to 13m
- Synchronised platform movement
- Mechanical, hydraulic & electronic safety devices
- No cross rails or torsion bars between platforms
- Anti slip platforms

ONLY
£26,579
5 Year Lease £141.38 pw



Wheel Alignment

Matrix Truck 4 CCD (64TWS)

- 2 Front measuring heads with 4 CCD sensors & 2 rear infra red transmitters
- Quickly carry out precise measurement of all steering angles on the front axle
- Carry out two operations on front & rear axles to measure all related angles
- Repeat the operation to measure angles on vehicles with three or more axles, enabled by the long reading distance of the measuring heads

ONLY
£5999
5 Year Lease £31.91 pw



To discuss & to order, call your local IFA Member

PC Controlled Brake Testers

13t Brake Tester (LMBT 13)

- Digital brake tester at extraordinary value!
- DVSA approved
- LMBT 13 for classes 3, 4, 5L & 7
- Optional extra: touch screen remote

ONLY
£13,995
5 Year Lease £74.44 pw

18t ATF Approved Brake Tester

(XL441 COM)

- DVSA approved for ATF, Tachograph Testing & ATL
- Automatic test sequence & touch screen remote
- Outside installations

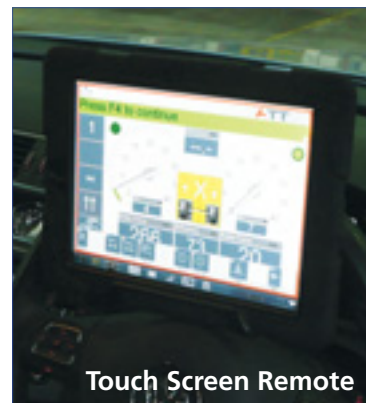
ONLY
£27,500
5 Year Lease £146.28 pw

Need an ATF Test lane?
Call your local IFA Member to discuss

NEW LOW COST BRAKE TESTER
An exceptional value 13t DIGITAL tester



LMBT 13/18



Touch Screen Remote

PROHEAT Oil Fired Cabinet Package with Built-In Fuel Tank & Flue Kit

- Use with 28 second fuel (paraffin/kerosene) or 35 second fuel (heating oil/diesel)
- All models 240V
- Low-noise radial fan
- Equipped with thermostat
- Capacities of 30, 42, 64, 84kW net
- 4-Sided adjustable outlet opening guarantees equal air distribution
- Summer/winter circuit for heating/ventilation

Model	Nett Heat Output	Max kW	Consumption	Air Flow	Tank Capacity
PROHEAT30	104,000 Btu/hr	30kW	3.4 L/hr	1,900 m ³ /hr	55L
PROHEAT40	144,000 Btu/hr	42kW	4.7 L/hr	2,800 m ³ /hr	55L
PROHEAT60	220,000 Btu/hr	64kW	7.2 L/hr	4,500 m ³ /hr	75L
PROHEAT80	286,000 Btu/hr	84kW	9.5 L/hr	5,300 m ³ /hr	105L

	Price	5 Yr Lease pw	
PROHEAT30	£1999	£10.63	FROM £1999 5 Year Lease £10.63 pw
PROHEAT40	£2299	£12.23	
PROHEAT60	£2599	£13.82	
PROHEAT80	£2899	£15.42	



No space for a bulk fuel tank? PROHEAT is your solution!

Stainless Steel Flue Kit INCLUDED:

- Gives approx. 5.2m (17ft) ground clearance
- 4 x 1m Flue pipes
- 1 x Terminal
- 2 x Adjustable wall fixing brackets
- 1 x High temperature silicone rubber roof seal & fixing kit for profiled or corrugated roof & cladding
- 1 Tee-Piece (flue to heater)
- Additional 1m flue pipe available:

For Model	Price
PROHEAT30,40,60	£28
PROHEAT80	£36

Automatic Ignition Universal Oil Fired Heaters

- Clean combustion & high efficiency
- Large airflow blower fans
- Fan-only facility for summer ventilation
- Large capacity fuel tanks
- Basic room thermostat is standard
- Optional digital thermostat/time control
- Compressed air supply required for burner

Model	Heat Capacity	Fan Capacity	Fuel Tank	Consumption	Compressed Air Displacement	Supply
SB40	153,000 Btu/hr	3200 m ³ /hr	80 L	4.6 L/hr	1.0 - 1.3 CFM	230V
SB60	204,000 Btu/hr	4100 m ³ /hr	80 L	6.0 L/hr	1.5 - 1.8 CFM	230V
SB80	306,000 Btu/hr	6200 m ³ /hr	130 L	9.0 L/hr	2.0 - 2.6 CFM	400V+N
SB110	436,000 Btu/hr	8100 m ³ /hr	130 L	12.8 L/hr	3.0 - 3.6 CFM	400V+N

	Price	5 Yr Lease pw	
SB40	£3599	£19.14	FROM £3599 5 Year Lease £19.14 pw
SB60	£3899	£20.74	
SB80	£5499	£29.25	
SB110	£5999	£31.91	



Use any of these fuels:

- Used Oil*
- 35 Second Heating Oil/Diesel
- Processed Fuel Oil (PFO)
- Rapeseed, linseed & some vegetable oils
- Bio Diesel

Stainless Steel Flue Kits from £269

Stainless steel flue kits (6m ground clearance):
98.085.746 SB40 **98.085.100** SB60
98.085.170 SB80/SB110

Optional extras (additional cost):

Motor/Pump Kits: to connect to a bulk fuel tank (pipework/electric cable not incl.)
98.085.399 Connects to bottom outlet, gravity fed, max distance 10m
98.087.161 Connects to top outlet &/or above 10m distance
98.085.890 Digital Thermostat/Timer

Main Fan Filter Kits:
98.085.541 SB40 & SB60
98.085.542 SB80 & SB110

Also available - just call your local branch:
 Fire Valves, Magnetic Valves & High Pressure Filters for use with Pump Kits

BSO Oil Fired Cabinet for Connection to a Bulk Fuel Tank

- Connect to a bulk fuel tank
- Use with 28 second fuel (paraffin/kerosene) or 35 second fuel (heating oil/diesel)
- 13 Models - heat outputs up to 381kW (1.3M Btu/hr)
- Combustion air inlet kit as standard
- Thermostat, time control, oil filter & fire valve
- Main fan filter kits available for dusty/hazardous places

Model	Nett Heat Output	Air Flow	Swivel Heads	Consumption	Supply
BSO30	109,000 Btu/hr	2196 m ³ /hr	2	3.43 L/hr	230V
BSO40	146,440 Btu/hr	2556 m ³ /hr	2	4.67 L/hr	230V
BSO60	203,330 Btu/hr	3708 m ³ /hr	2	6.46 L/hr	230V
BSO85	280,530 Btu/hr	5004 m ³ /hr	3	9.10 L/hr	230V
BSO120	418,000 Btu/hr	7740 m ³ /hr	3	13.30 L/hr	415V

	Price	5 Yr Lease pw	
BSO30	£2050	£10.90	FROM £2050 5 Year Lease £10.90 pw
BSO40	£2150	£11.44	
BSO60	£2450	£13.03	
BSO85	£2580	£13.72	
BSO120	£3150	£16.76	



Stainless Steel Flue Kit for BSO Models

Gives approx. 4.6m (15ft) ground clearance

- 3 x 1m Flue pipes, 1 x Terminal, 1 x Storm collar
- 2 x Adjustable wall fixing brackets
- 1 x Silicone rubber pipe flashing / fixing kit for profiled or corrugated roof & cladding
- Minimum flue requirement: 3 metres

For Model	Part No	Price	(Additional 1m Flue Pipe)
BSO30 & 40	FK5	£279	(£36)
BSO60	FK6	£289	(£37)
BSO85 & 120	FK7	£299	(£39)

FROM £279



Call your local IFA Member for all your heating needs

*Used Oil: Subject to licensing control. If heaters are operated on Used Oil they fall under Chapter IV of the Industrial Emissions Directive (IED). A relevant permit is required under Schedule 13A of the Environmental Permitting Guidance (EPR). Full details at www.thermobile.co.uk, under NEWS.

The Original THERMOBILE
 Manufacturing workshop heaters for over 50 years
 Fully trained Service Agents • Comprehensive stock of spare parts
 Ask for details of our full range including downflow fans, dehumidifiers, etc



KÄRCHER PROFESSIONAL CLEANING

Call your local IFA Member for more information & to order the full Kärcher range

Hot Water Pressure Washer with Steam Mode

- 3-Piston axial pump, ceramic pistons
- 4-Pole motor with long-life bearings
- Simple user-friendly controls

Single Phase 1.077-411.0

High performance, reliability & economy. eco!efficiency mode offers up to 20% energy savings of with no compromise in performance.

- Model: HDS 7/10-4 M
- Power: 3.4kW (240V)
- Pressure: 30-100 bar
- Water Flow: 350-700 litres/hr

ONLY
£1999
5 Year Lease £10.63 pw



3 Phase 1.071-422.0

Very high water flow/pressure for the toughest tasks. Ideal for regular, heavy-duty use.

- Model: HDS 10/20-4 M
- Power: 7.8kW (3 phase 420V 50Hz)
- Pressure: 30-200 bar
- Water Flow: 500-1000 litres/hr

ONLY
£2279
5 Year Lease £12.12 pw



NEW
EASY!Force
trigger gun
Full details on p2



Scrubber Dryer 1.515-401.0

Mains-operated affordable scrubber dryer with disc technology. EASY-Operation system. Highly manoeuvrable - ideal for small, heavily cluttered areas up to 900m².

- Model: BD43/35
- Working width, brush: 430mm
- Working width, vacuum: 850mm
- Motor rating: 1400W
- Fresh / waste water tanks: 35 / 35 litres
- Brush rotation speed: 180 rpm
- Max. area performance: 1720m²
- L x W x H: 1136 x 505 x 1030mm

ONLY
£1579
5 Year Lease £8.40 pw



Cold Water Pressure Washer 1.524-129.0

Powerful, robust - ideal for large vehicle valeting. High flow rate shifts dirt & detergent quickly/easily. Ideal for prolonged periods of use.

- 3-Piston axial pump for longer service life
- Slow running, 4-pole, air cooled electric motor for high cleaning efficiency & long service life
- Automatic shutdown reduces energy usage
- Highly manoeuvrable

- Model: HD 7/11-4 M Plus
- Power: 3kW (240V)
- Water Flow: 500-700 litres/hr
- Pressure: 30-110 bar

ONLY
£829



Expert Quality

Expert Ultrasonic Cleaning Tank 27 litre (60987)

- Extremely effective dirt & grime removal
- Microscopic bubbles compressed by surrounding fluid implode, creating heat/agitation & a highly effective scrubbing action
- Use with water or non-volatile cleaning agents
- Stainless steel tank (with drain tap) & basket
- Tank size: 500 x 300 x 150mm
- Ultrasonic power: 500W
- Heating power: 500W
- Time setting: 1-99 mins
- Temperature setting: 0-80°C

ONLY
£489



Expert 1" Sq Dr Metric Socket Set 22pc (02579)

- 17 x 6 Point sockets size: 36, 38, 41, 46, 50, 54, 55, 58, 60, 63, 65, 67, 70, 71, 75, 77, 80mm
- Reversible ratchet head & 2 extension bars (200 & 400mm)
- Universal bar/adaptor - when used together forms a sliding 'T' bar
- Chrome vanadium steel, hardened, tempered & satin chrome plated
- Note: Set weighs 43kg & requires 2 people to lift

ONLY
£389



Expert 180A 230V Multi Process Welder MIG/TIG/MMA (64301)

- Portable/lightweight microprocessor-controlled inverter technology
- Precise TIG DC welding, MIG & ARC welding
- Includes: complete MIG torch (Euro Connector), complete TIG torch, complete MMA electrode holder & earth clamp
- Input current: 16A; Output current: 20-180A
- MIG welding wire sizes: 0.8 & 1.0mm
- MMA/ARC electrode sizes: 1.6-4.0mm
- Duty cycle: 25% - 180A
- Weight: 15.3kg

ONLY
£469



Expert Induction Heating Tool Kit (80808)

- Easy to use - install appropriate coil & place over or around ferrous metal to be heated
- Safer / more efficient than oxy-acetylene
- Includes 4 coils: 2 x Direct coils (19mm & 26mm) 1 x Flex coil, 1 x Pad coil
- Input Voltage: 230V, 50/60Hz
- Input Current: 7.5A
- Power: 1.75kW
- Load Factor: 50% @ 1.5kVA, 100% @ 1.0kVA
- Weight: 4.5kg

ONLY
£469



Call your local IFA Member to order

Essential CV Tools

Air Brake Test Gauge Set (VS932)

- Locate air brake pressure problems quickly/easily
- Three gauges for more accurate diagnosis in locating faults along braking system
- Use at roadside or in workshop
- 3 x Large 0-20bar (0-300 psi) gauges with rubber bumper, male/female couplings, 3 x hoses & test point adaptor M16 x 1.5mm

ONLY
£169.95



CV Clutch Alignment Set (CV031)

- Screw action quickly adjusts to hub Ø
- Four interchangeable spigot adaptors aid close alignment
- Spigot Adaptors: Ø20, 25, 27, 30mm
- Mandrel: Ø36-45, 42-52mm

ONLY
£129.95



Impact Socket Set 8pc Deep 1" Sq Dr - Metric (AK888M)

- Chrome Molybdenum steel with manganese phosphate finish
- WallDrive® sockets, sizes: 24, 27, 30, 32, 33, 34, 36, 41mm
- Suits use with air impact wrench

ONLY
£79.95



Low Voltage Submersible Transfer Pump 12V (TP94)

- Use with diesel, non-aggressive chemicals & fresh or dirty water
- 3m Outlet hose with stainless steel nozzle
- 4m Battery cable with clips
- Fits through Ø54mm aperture to empty containers
- End cap unscrews to clean filter

ONLY
£49.95



RoadStart® Emergency Power Pack 12/24V 4400 Peak Amps (PBI4424S)

- DEKRA Approved
- High performance Hawker Enersys AGM battery
- Cable & clamp Length: 1.39m
- Integrated fan removes any gases safely
- Tough, high impact, corrosion proof casing
- Isolating rotary on/off switch
- Fusible link increases unit protection
- 15A Thermal trip with self-resetting fuse integrated in 12V accessory socket
- Surge/spike protection
- Audible warning system (AWS): reverse polarity, overvoltage, connection reminder
- Digital display: internal / vehicle battery voltage

ONLY
£549.95



Rotary AdBlue® Pump (TP57)

- Polypropylene pump with Bakelite vanes to transfer AdBlue®, acids, alkalis, oils & fluids of similar viscosity
- 1.3m Polyethylene extension hose
- 2" BSP connector for 205ltr drums
- Delivers approximately 0.35ltr/revolution

ONLY
£74.95



High Level Support Stand 12t (ASC120)

- Min./Max. Height: 1295/1905mm
- Independently UK load tested
- Sturdy welded steel construction
- 3 x Large interchangeable crutches to distribute load
- Includes captive pin load support
- Retracting castors for easy manoeuvrability

ONLY
£429.95



Torque Multiplier Wheel Nut Wrench 65:1 (SX500)

- Removes/installs wheel nuts when air impact wrench is difficult
- 210mm Extension spins loosened nut
- 32mm Impact socket
- Carry-case

ONLY
£84.95



SEALEY
www.sealey.co.uk

PICKSONS

EUROPEAN TRUCK & TRAILER PARTS

Avonmouth

01179 821 321

Bridgwater

01278 450 152

Bristol

01179 721 188

Gloucester

01452 757 500

Swindon

01793 822 922

Yate

01454 311 848